

---

<b>Cable ID</b> 1A/8A-B.17	<b>Summary</b> PASS	<b>Test Limit</b> TIA Cat 5e Channel	<b>Length</b> 81.1 m	<b>Headroom</b> 11.9 dB (NEXT)	<b>Date / Time</b> 03/24/2017 12:17 PM
-------------------------------	------------------------	---	-------------------------	-----------------------------------	---

Total Length:	81.1 m
Number of Reports:	1
Number of Passing Reports:	1
Number of Failing Reports:	0
Number of Warning Reports:	0
Documentation Only:	0



**Cable ID: 1A/8A-B.17**

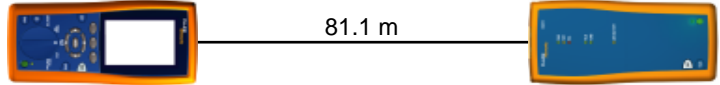
Date / Time: 03/24/2017 12:17:22 PM  
**Headroom 11.9 dB (NEXT 12-78)**  
**Test Limit: TIA Cat 5e Channel**  
 Cable Type: Cat 5e UTP  
 Calibration Date: 04/18/2014

Operator: ISECTOR  
 Software Version: 2.7400  
 Limits Version: 1.9300  
 NVP: 69.0%

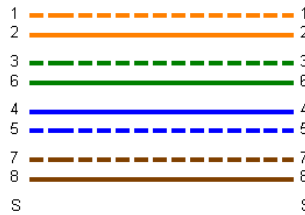
**Test Summary: PASS**

Model: DTX-1800  
 Main S/N: 2227025  
 Remote S/N: 2227026  
 Main Adapter: DTX-CHA002  
 Remote Adapter: DTX-CHA002

Length (m), Limit 100.0	[Pair 45]	81.1
Prop. Delay (ns), Limit 555	[Pair 78]	402
Delay Skew (ns), Limit 50	[Pair 78]	10
Resistance (ohms)	[Pair 36]	21.1
Insertion Loss Margin (dB)	[Pair 78]	2.7
Frequency (MHz)	[Pair 78]	97.0
Limit (dB)	[Pair 78]	23.6

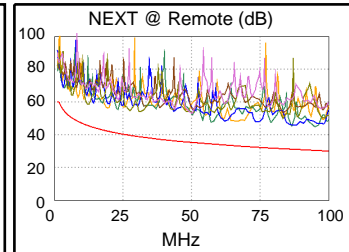
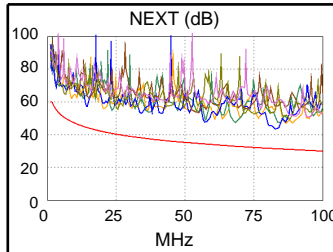


Wire Map (T568B)  
**PASS**

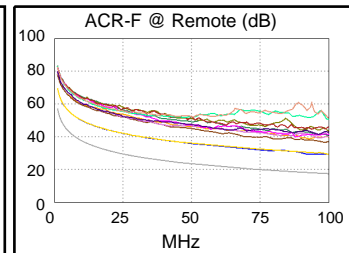
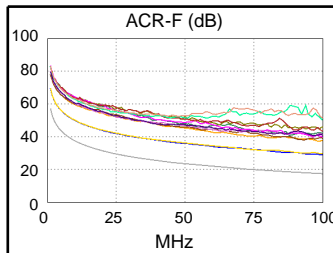


Worst Case Margin Worst Case Value

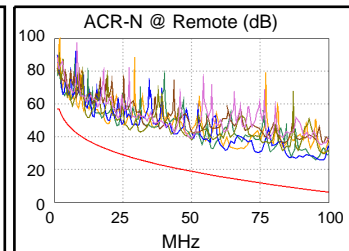
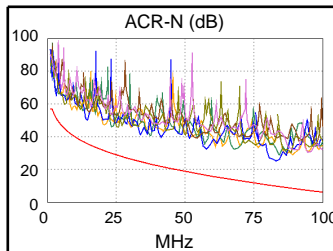
PASS	MAIN	SR	MAIN	SR
Worst Pair	12-78	12-45	12-78	12-45
<b>NEXT (dB)</b>	11.9	12.7	11.9	14.3
Freq. (MHz)	82.5	57.3	82.5	95.3
Limit (dB)	31.5	34.2	31.5	30.4
Worst Pair	12	12	12	12
<b>PS NEXT (dB)</b>	13.8	13.4	13.9	15.2
Freq. (MHz)	57.5	3.0	84.0	95.8
Limit (dB)	31.2	52.6	28.4	27.4



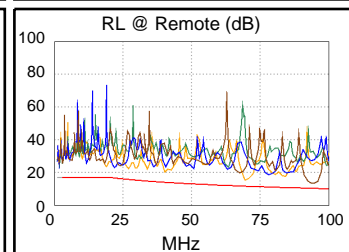
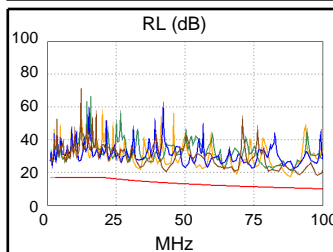
PASS	MAIN	SR	MAIN	SR
Worst Pair	12-78	12-78	12-78	12-78
<b>ACR-F (dB)</b>	11.5	11.3	11.5	11.8
Freq. (MHz)	86.5	91.5	99.3	99.8
Limit (dB)	18.7	18.2	17.5	17.4
Worst Pair	12	12	78	12
<b>PS ACR-F (dB)</b>	14.2	13.7	14.3	13.7
Freq. (MHz)	91.0	99.3	100.0	99.3
Limit (dB)	15.2	14.5	14.4	14.5



N/A	MAIN	SR	MAIN	SR
Worst Pair	12-78	36-78	12-78	12-78
<b>ACR-N (dB)</b>	13.9	13.9	15.1	18.9
Freq. (MHz)	14.1	12.0	82.5	96.5
Limit (dB)	36.0	37.9	9.9	6.8
Worst Pair	12	12	12	12
<b>PS ACR-N (dB)</b>	15.5	14.0	17.3	18.8
Freq. (MHz)	3.1	3.1	84.0	95.8
Limit (dB)	48.4	48.4	6.6	4.0



PASS	MAIN	SR	MAIN	SR
Worst Pair	12	78	12	78
<b>RL (dB)</b>	6.6	2.9	6.6	2.9
Freq. (MHz)	87.8	94.3	87.8	94.3
Limit (dB)	10.6	10.3	10.6	10.3



Compliant Network Standards:  
 10BASE-T      100BASE-TX      100BASE-T4  
 1000BASE-T    ATM-25            ATM-51  
 ATM-155      100VG-AnyLan    TR-4  
 TR-16 Active    TR-16 Passive