

---

<b>Cable ID</b> 1A/8A-B.15	<b>Summary</b> PASS	<b>Test Limit</b> TIA Cat 5e Channel	<b>Length</b> 81.5 m	<b>Headroom</b> 10.3 dB (NEXT)	<b>Date / Time</b> 03/24/2017 12:05 PM
-------------------------------	------------------------	---	-------------------------	-----------------------------------	---

Total Length:	81.5 m
Number of Reports:	1
Number of Passing Reports:	1
Number of Failing Reports:	0
Number of Warning Reports:	0
Documentation Only:	0



**Cable ID: 1A/8A-B.15**

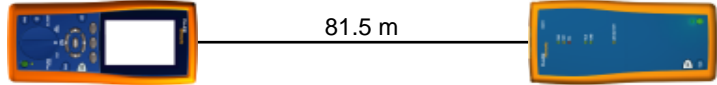
Date / Time: 03/24/2017 12:05:48 PM  
**Headroom 10.3 dB (NEXT 12-36)**  
**Test Limit: TIA Cat 5e Channel**  
 Cable Type: Cat 5e UTP  
 Calibration Date: 04/18/2014

Operator: ISECTOR  
 Software Version: 2.7400  
 Limits Version: 1.9300  
 NVP: 69.0%

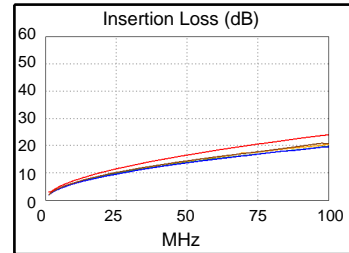
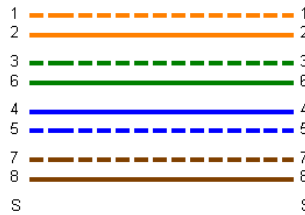
**Test Summary: PASS**

Model: DTX-1800  
 Main S/N: 2227025  
 Remote S/N: 2227026  
 Main Adapter: DTX-CHA002  
 Remote Adapter: DTX-CHA002

Length (m), Limit 100.0	[Pair 45]	81.5
Prop. Delay (ns), Limit 555	[Pair 78]	404
Delay Skew (ns), Limit 50	[Pair 78]	10
Resistance (ohms)	[Pair 36]	21.1
Insertion Loss Margin (dB)	[Pair 78]	2.7
Frequency (MHz)	[Pair 78]	97.3
Limit (dB)	[Pair 78]	23.7

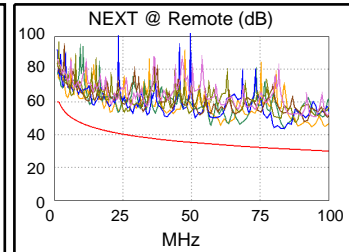
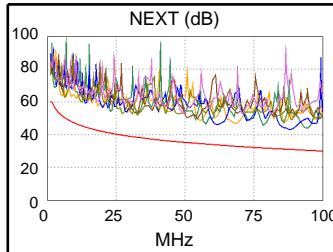


Wire Map (T568B)  
**PASS**

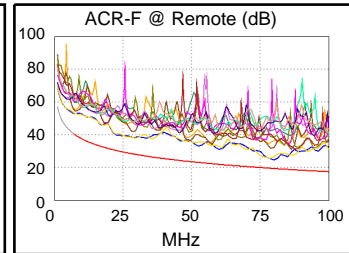
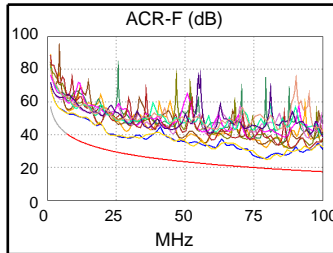


Worst Case Margin Worst Case Value

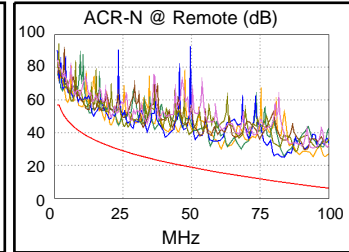
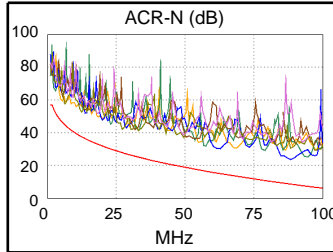
PASS	MAIN	SR	MAIN	SR
Worst Pair	12-36	12-36	12-78	12-78
<b>NEXT (dB)</b>	11.6	10.3	11.8	12.1
Freq. (MHz)	5.1	4.5	88.3	82.0
Limit (dB)	51.8	52.7	31.0	31.6
Worst Pair	12	12	12	12
<b>PS NEXT (dB)</b>	12.5	12.0	13.5	12.3
Freq. (MHz)	5.1	4.8	85.5	83.8
Limit (dB)	48.8	49.3	28.3	28.4



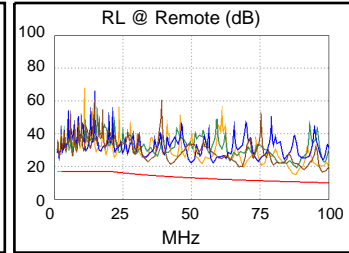
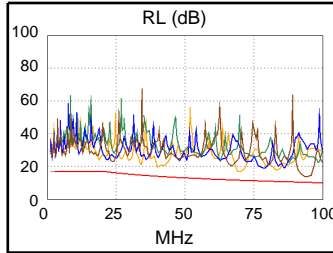
PASS	MAIN	SR	MAIN	SR
Worst Pair	78-12	12-78	78-12	12-78
<b>ACR-F (dB)</b>	5.5	5.2	5.5	5.2
Freq. (MHz)	79.5	79.5	80.0	79.5
Limit (dB)	19.4	19.4	19.3	19.4
Worst Pair	12	12	12	12
<b>PS ACR-F (dB)</b>	8.0	8.1	8.0	8.1
Freq. (MHz)	79.5	78.3	79.5	78.3
Limit (dB)	16.4	16.5	16.4	16.5



N/A	MAIN	SR	MAIN	SR
Worst Pair	12-36	12-36	12-78	12-78
<b>ACR-N (dB)</b>	12.4	11.0	15.0	15.4
Freq. (MHz)	5.0	4.5	88.5	83.8
Limit (dB)	47.0	48.0	8.5	9.6
Worst Pair	12	12	12	12
<b>PS ACR-N (dB)</b>	13.2	12.6	17.1	15.5
Freq. (MHz)	5.1	4.8	88.5	83.8
Limit (dB)	43.7	44.5	5.5	6.6



PASS	MAIN	SR	MAIN	SR
Worst Pair	78	12	78	12
<b>RL (dB)</b>	3.3	4.0	3.3	4.0
Freq. (MHz)	93.8	87.5	93.8	87.5
Limit (dB)	10.3	10.6	10.3	10.6



Compliant Network Standards:  
 10BASE-T      100BASE-TX      100BASE-T4  
 1000BASE-T    ATM-25            ATM-51  
 ATM-155       100VG-AnyLan    TR-4  
 TR-16 Active    TR-16 Passive